

GOD'S CREATION MANIFEST:

THE EYE

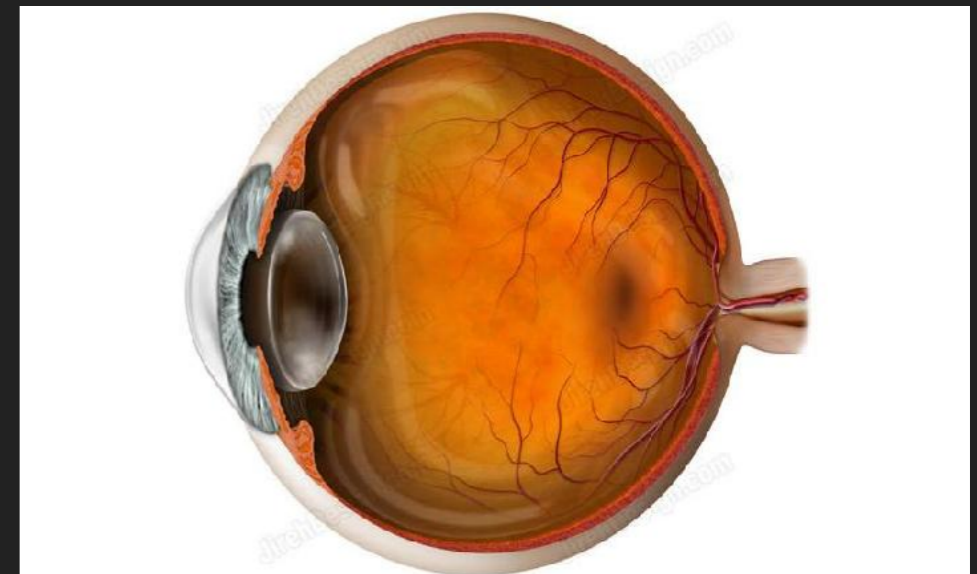
WORLDVIEW

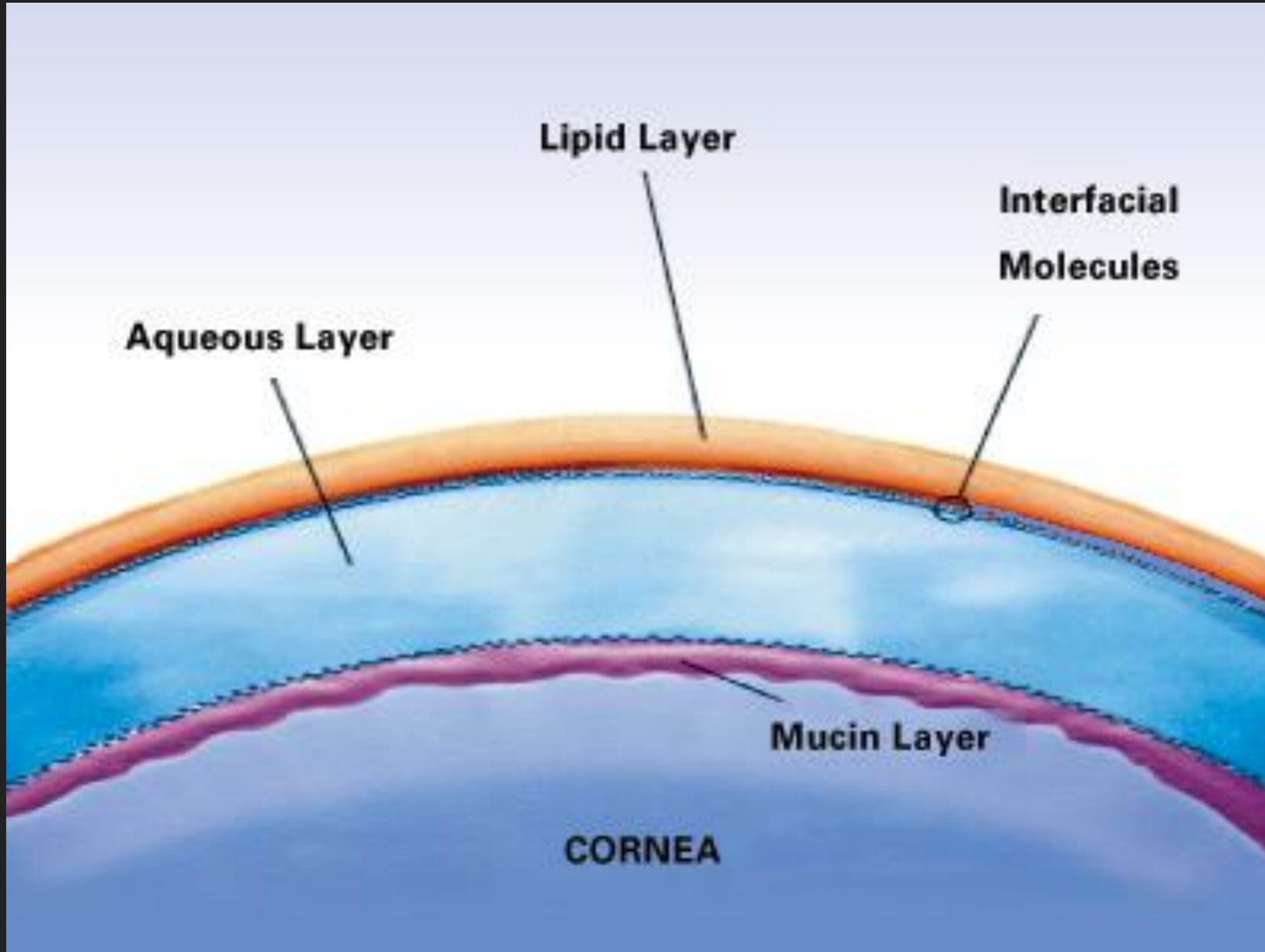
- ▶ “I have a prior commitment to the God of the Bible. It is not that the methods of Bible interpretation compel me to accept a spiritual explanation of the world, but, on the contrary, that I am forced by my adherence to a spiritual worldview (my faith) to believe the Bible even when it is counterintuitive and mystifying...my belief in God and his word is absolute, and I will not allow Satan’s foot in the door.”

Creationist Christian, David Posey

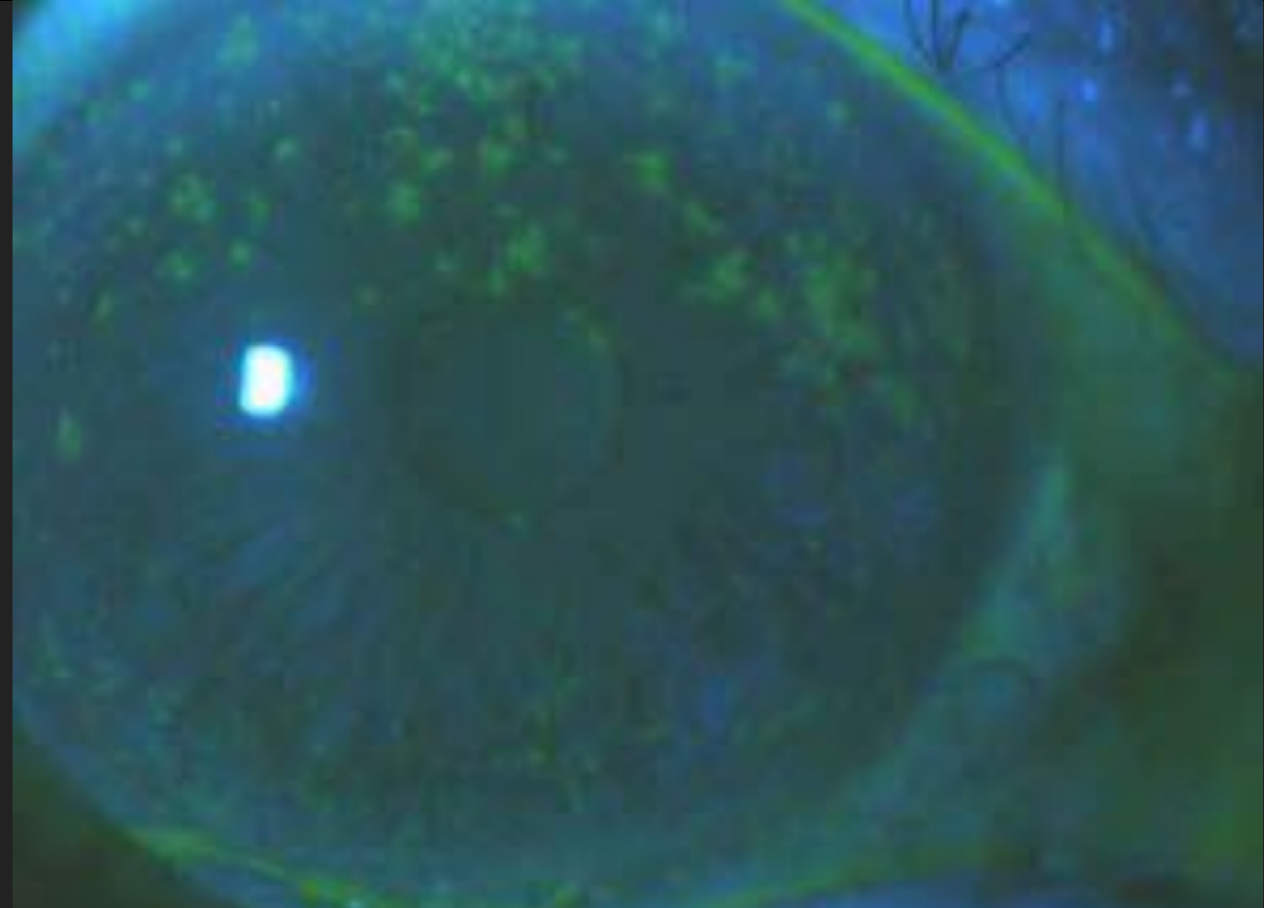
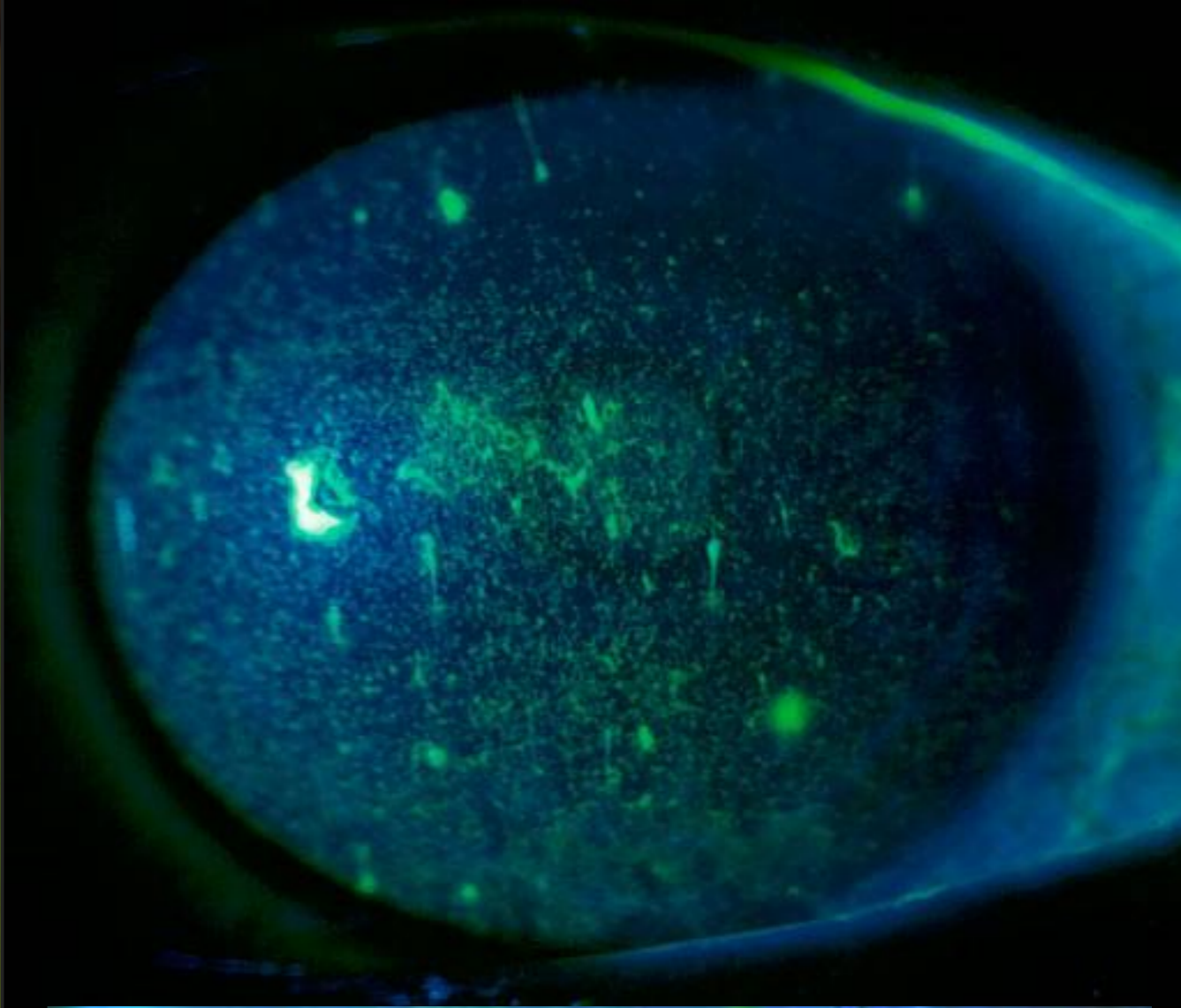
CLASS OBJECTIVES

- ▶ Present an ocular anatomy overview (from anterior to posterior) that will help us appreciate the miraculous and creative genius of God
- ▶ Include biological references from the Bible
- ▶ Discuss recent discoveries and our reaction to them
- ▶ Discuss the true purpose of vision





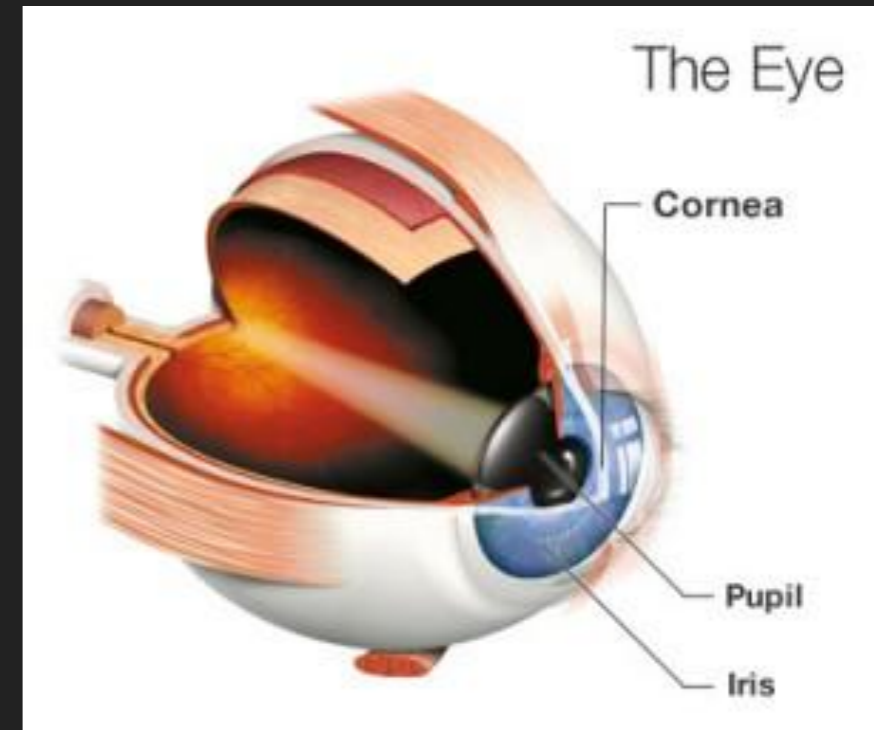
LAYERS OF THE TEAR FILM

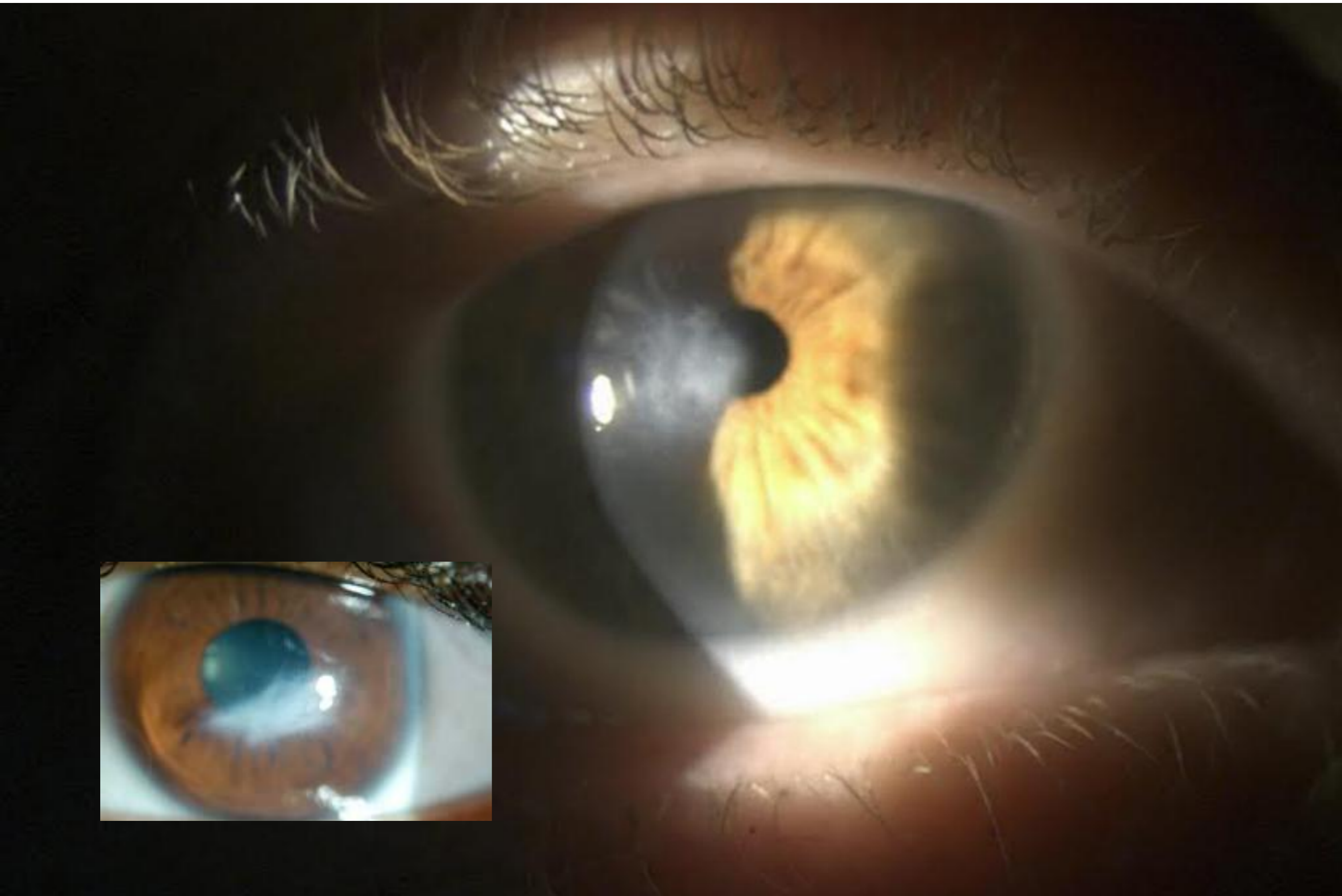


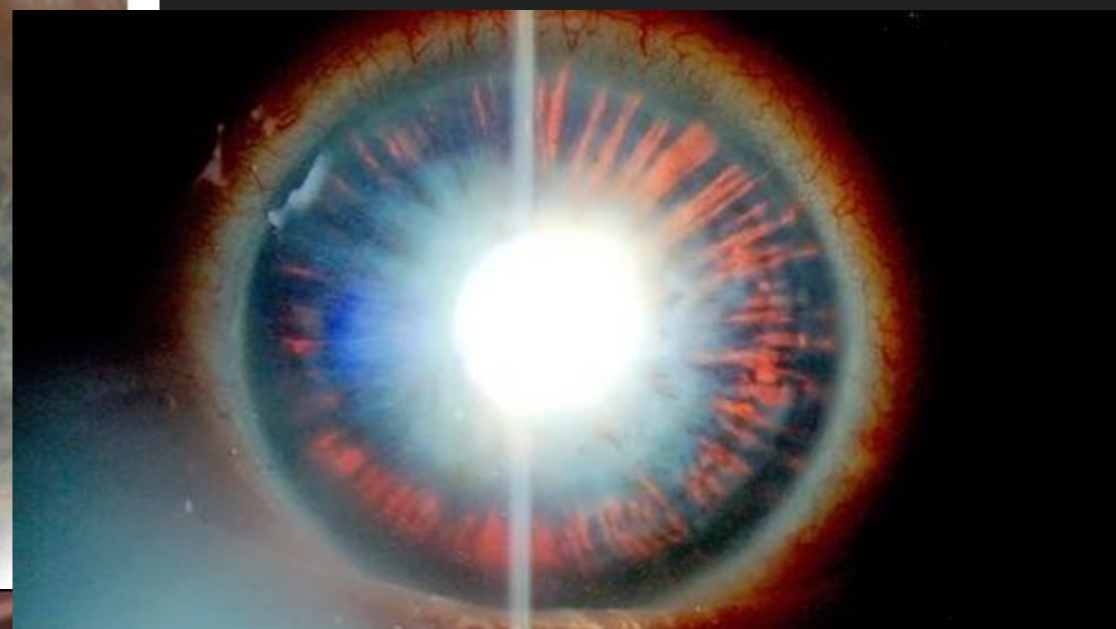
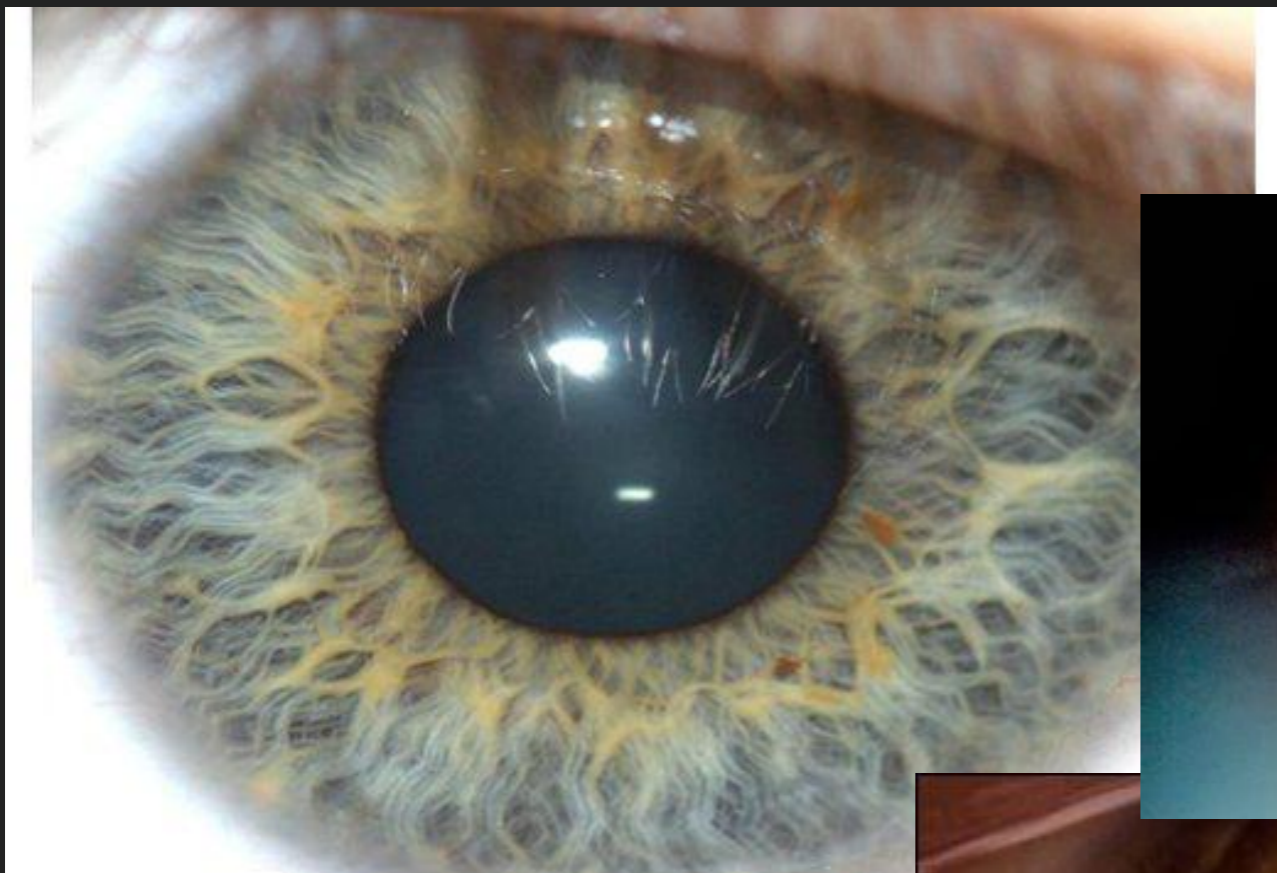


CORNEA

- ▶ can focus light 40 diopters
- ▶ precise collagen crossfibril orientation

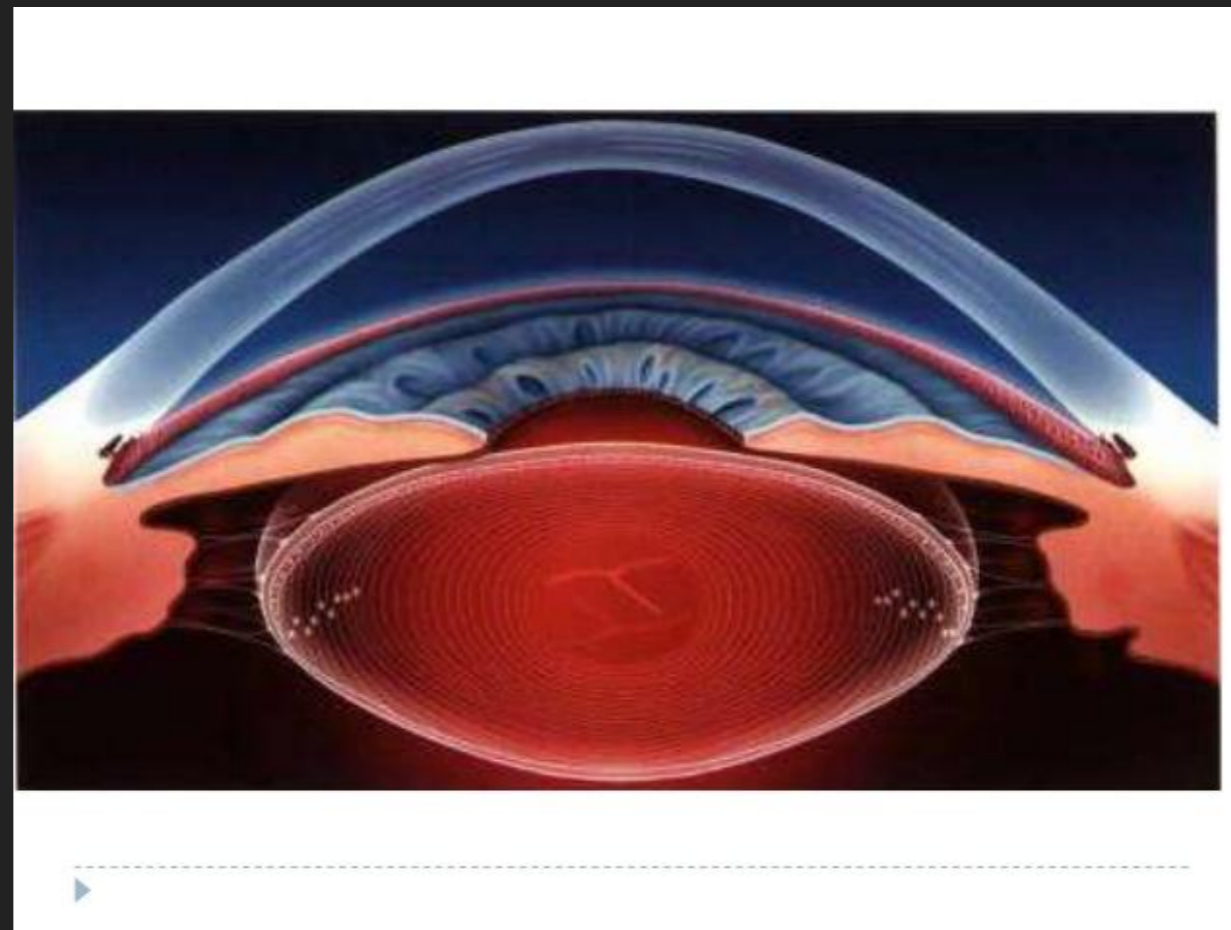
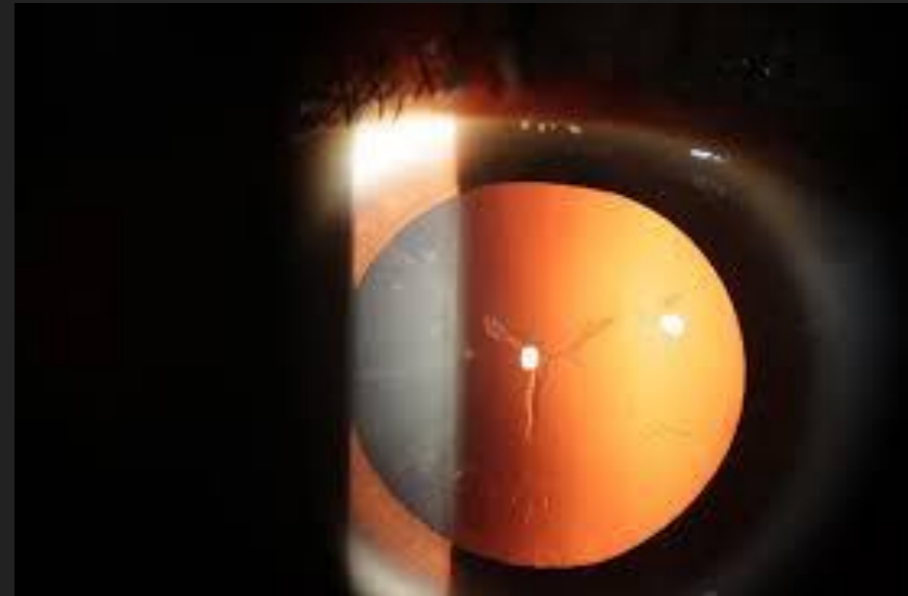


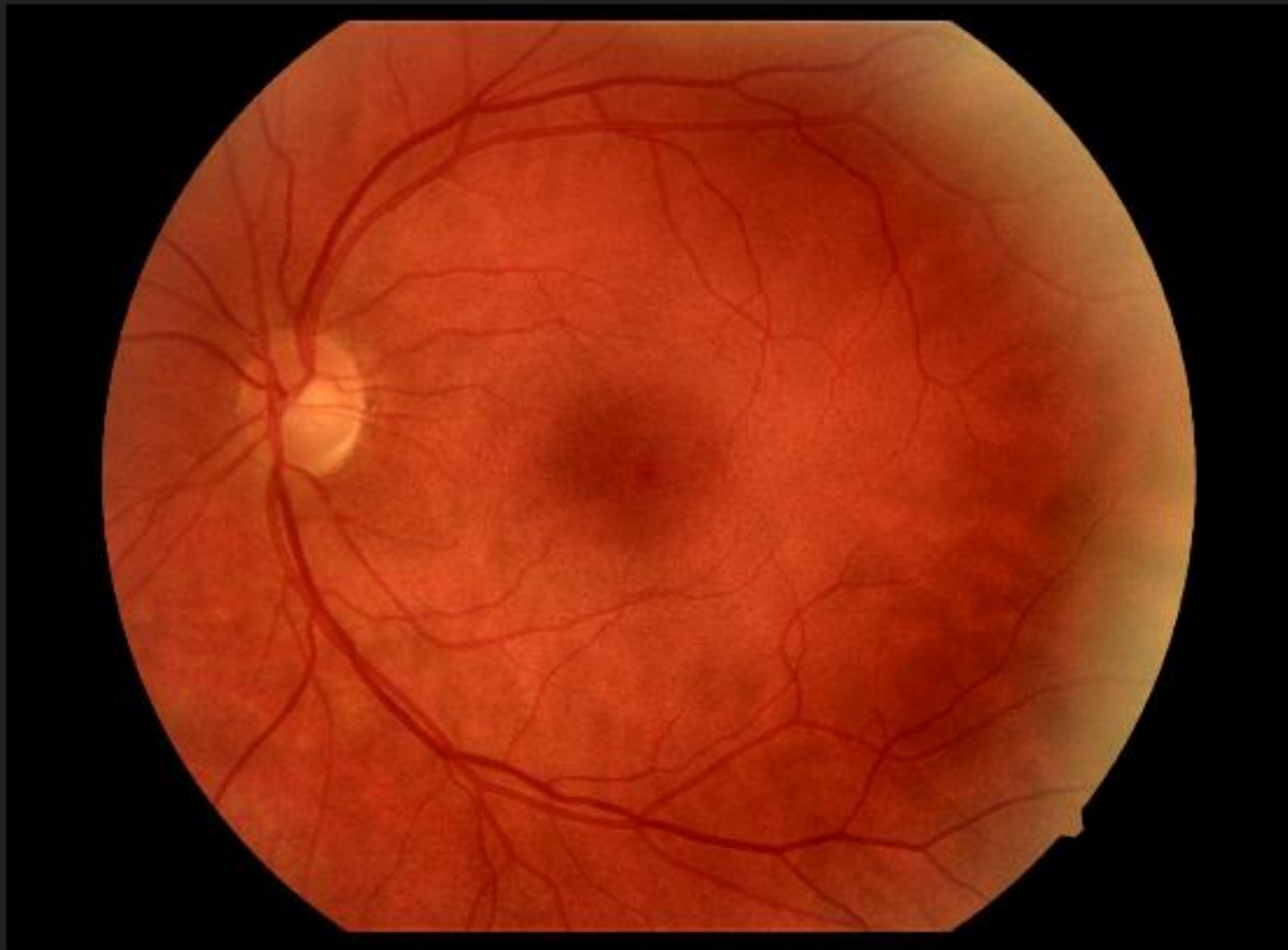




CRYSTALLINE LENS

- ▶ active focus (20 diopters)
- ▶ Natural progression: loss of accommodation, sclerosis
- ▶ Ecclesiastes 12:3





OS Image 10:21:51

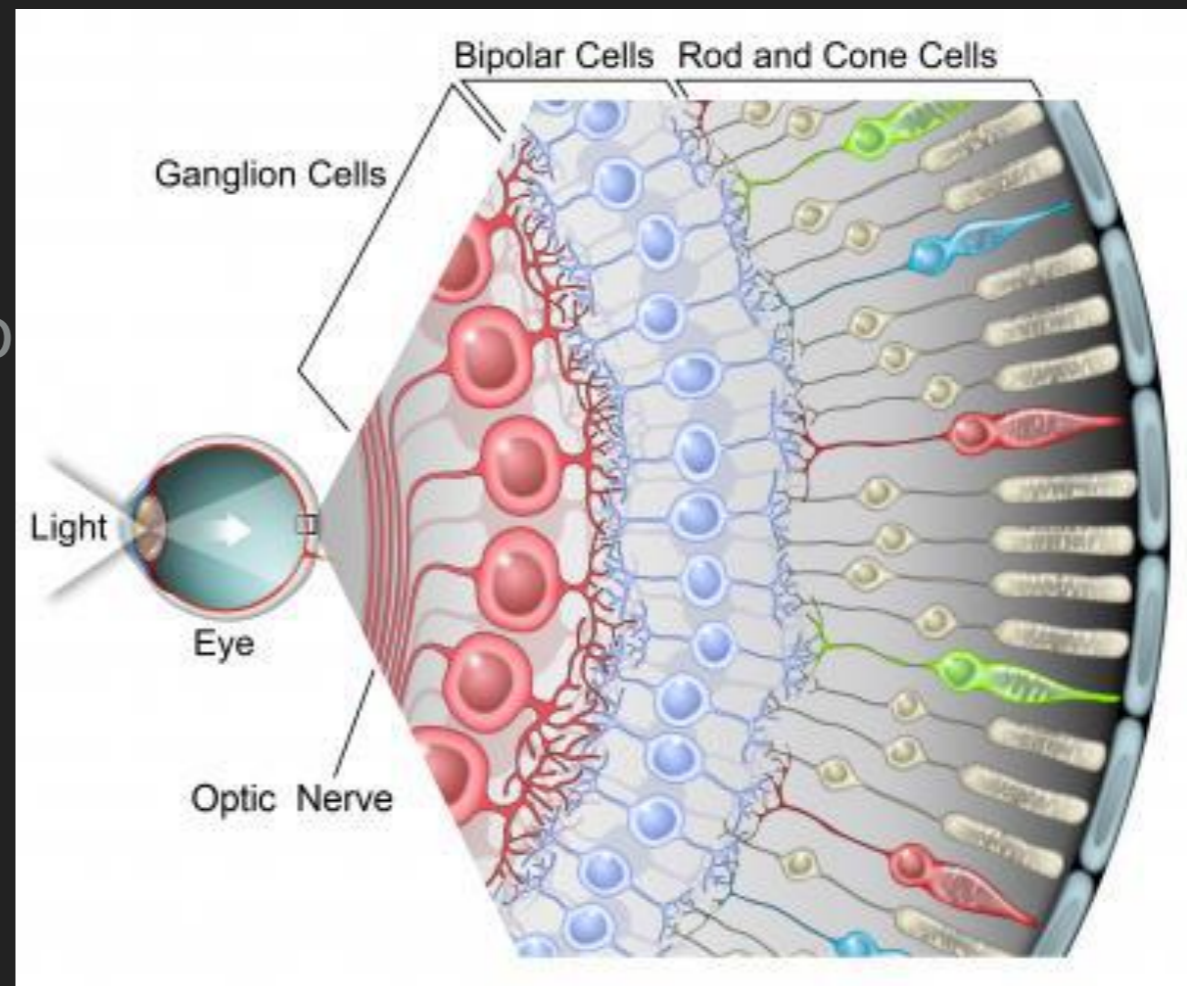
omine
signatu

RETINA

HOW DO PHOTONS OF LIGHT GET CONVERTED TO CHEMICAL ENERGY?

PHOTORECEPTOR CELLS

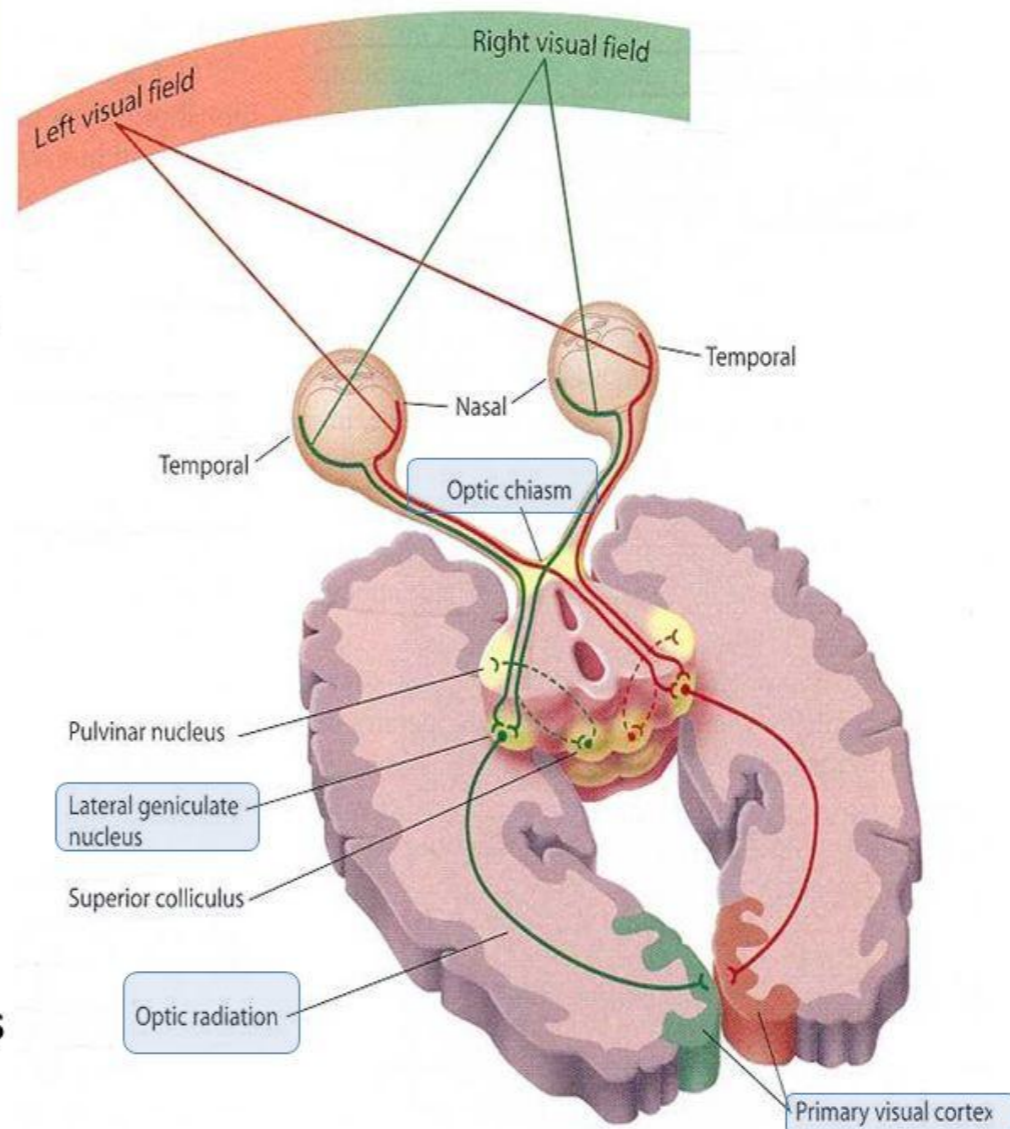
- ▶ 130 million rod receptors
- ▶ 7 million cones
- ▶ the human retina can process 1 photon of light to 10 billion photons of light



VISUAL PATHWAY & PERCEPTION

Visual Pathway

1. Cones
2. Bipolar neurons
3. Ganglion cell's axon forms the optic nerve
4. Optic nerve to the Optic Chiasm
5. Optic tract
6. Lateral geniculate nuclei of the thalamus
7. Optic Radiations
8. Primary visual areas of the occipital lobes



ARE THERE ATTRIBUTES OF VISION THAT ARE NOT EXPLAINED BY AN EVOLUTIONARY PROCESS?

- ▶ Light reflects off image, light waves enter, conversion to chemical signal, delivered to primary visual cortex, assimilation of the image by brain.....*now what?*
 - ▶ How do you react? (move to or from, duck or jump)
 - ▶ Does it evoke a memory?
 - ▶ How does it make you feel?
 - ▶ What do you do with the image ethically...and why should I care?

THE ORIGIN OF SPECIES?

“To suppose that the eye, with all its inimitable contrivances for adjusting the focus to different distances, for admitting different amounts of light, and for the correction of spherical and chromatic aberration, could have been formed by natural selection, seems, I freely confess, absurd in the highest possible degree.”

-Charles Darwin

PAX-6 GENE

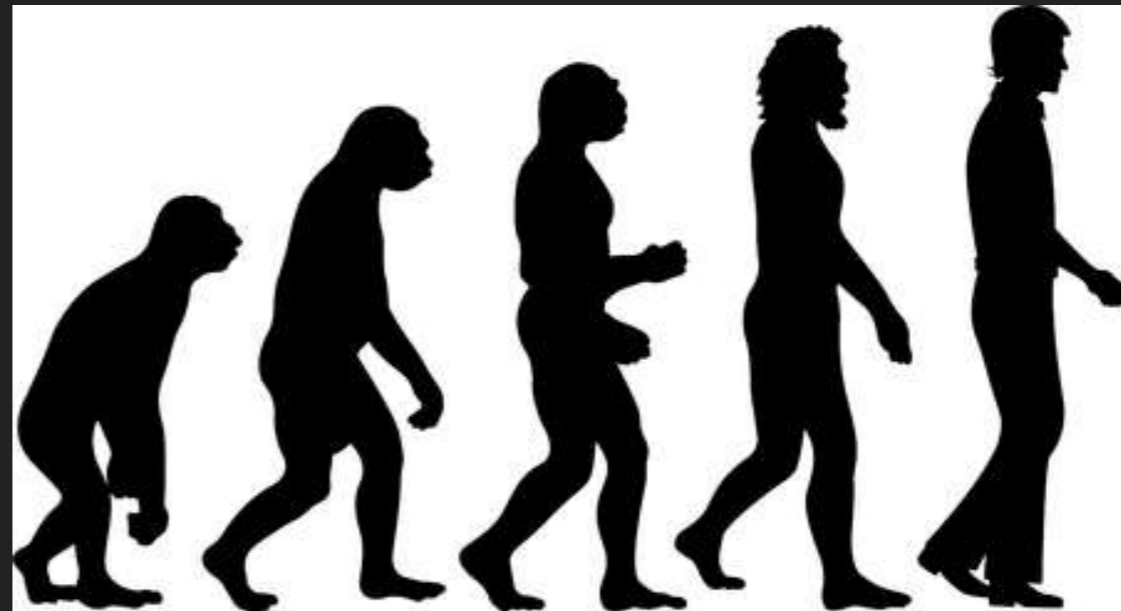
“Why are these genes so similar when the animals from which they come, and the eyes that they develop, are so different? There are two basic evolutionary explanations for similarities: homology and analogy. Are these genes homologous (i.e., were they passed down from the common ancestor of all these different organisms) or analogous (i.e., did they all evolve independently through convergent evolution)?

Based on the observations that all of these gene versions are remarkably similar in sequence, have related functions, and are incredibly widespread (animals all across the tree of life have them), scientists have concluded that they must be homologous and must have been inherited from the common ancestor of all these animals. It is just too unlikely that all these different animal lineages happened to independently evolve remarkably similar genes that do remarkably similar jobs. The most [parsimonious](#) explanation is that the gene evolved just once long ago and was then passed down to all these different modern animal lineages.”

- ▶ “concerning the condition of the sons of men, **God tests them, that they may see that they themselves are like animals.** For what happens to the sons of men also happens to animals; one thing befalls them: as one dies, so dies the other. Surely, they all have one breath; man has no advantage over animals, for all is vanity. All go to one place: all are from the dust, and all return to dust. Who knows the spirit of the sons of men, which goes upward, and the spirit of the animal, which goes down to the earth?”

OUR GOD GIVEN TEST:

- ▶ It is not are we going discover, but rather, what are we going to do with this information?



Romans 1:20-25

INTELLIGENT DESIGN - OUR VISUAL ABILITY POINTS TO A CREATOR

- ▶ Include ocular anatomy and visual perception
- ▶ Avoid miscommunication that our anatomy is created perfect for this life
- ▶ Identify the end game
- ▶ Emphasize the purpose of vision
 - ▶ God uses his vision in the beginning
 - ▶ God uses his vision to discern (it was good)
 - ▶ we are created in God's image
 - ▶ we are charged to make discernment using our physical vision, on where to place our faith regarding the things that cannot be seen. We are further charged during this life to bend our worldview toward this faith...not our sight.



“FOR WE WHO ARE IN THIS TENT GROAN, BEING BURDENED, NOT BECAUSE WE WANT TO BE UNCLOTHED, BUT FURTHER CLOTHED, THAT MORTALITY MAY BE SWALLOWED UP BY LIFE. NOW HE WHO HAS PREPARED US FOR THIS VERY THING IS GOD WHO HAS ALSO GIVEN US THE SPIRIT AS A GUARANTEE. SO WE ARE ALWAYS CONFIDENT, KNOWING THAT WHILE WE ARE AT HOME IN THE BODY WE ARE ABSENT FROM THE LORD. FOR WE WALK BY FAITH, NOT BY SIGHT.”

2 Corinthians 5:2-7

IN THIS LIFE WE HAVE FAITH, HOPE, AND LOVE. LOVE CONTINUES FOREVER!

1 CORINTHIANS 13:13 (PARAPHRASED)

“AND LORD
HASTE THE DAY
WHEN THE FAITH
SHALL BE
GHT!”



atio Spafford