

# *Alleged Bible Contradictions*



**ORDERING**

is chronological

**ACCURACY**

is precise

**COMPRESSION**

is errant

**SELECTIVITY**

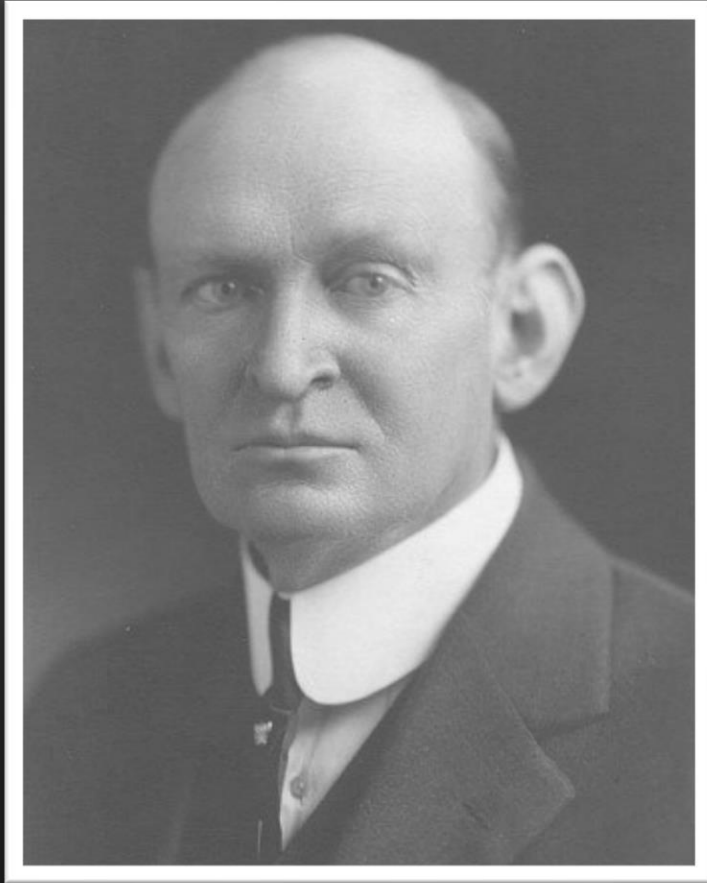
is denial

**MYSTERY**

is irreconcilable

**READER**





In explaining a difficulty, it is always to be remembered that even a possible explanation is sufficient to meet the objector. If several possible explanations are suggested, it becomes all the more unreasonable for one to contend that the discrepancy is irreconcilable.

*A.T. Robertson*

BIBLE SCHOLAR

# MATTHEW

DAVID  
SOLOMON  
REHOBAM  
ABIJAH  
ASA  
JEHOSHAPHAT  
JORAM  
UZZIAH  
JOTHAM  
AHAZ  
HEZEKIAH  
MANASSEH  
AMON  
JOSIAH  
JECONIAH  
SHEALTIEL  
ZERUBBABEL  
ABIUD  
ELIAKIM  
AZOR  
ZADOK  
ACHIM  
ELIUD  
ELEAZAR  
MATTHAN  
**JACOB**

DAVID	NERI
NATHAN	SHEALTIEL
MATTATHAH	ZERUBBABEL
MENAN	RHESA
MELEA	JOANNAS
ELIAKIM	JUDAH
JONAN	JOSEPH
JOSEPH	SEMEI
JUDAH	MATTATHIAH
SIMEON	MAATH
LEVI	NAGGAI
MATTHAT	ESLI
JORIM	NAHUM
ELIEZER	AMOS
JOSE	MATTATHIAH
ER	JOSEPH
ELMODAM	JANNA
COSAM	MELCHI
ADDI	LEVI
MELCHI	MATTHAT
	<b>HELI</b>

# LUKE

**JOSEPH**

Possible  
Explanation #1

# MATTHEW

## BIOLOGICAL LINE

DAVID  
SOLOMON  
REHOBOAM  
ABIJAH  
ASA  
JEHOSHAPHAT  
JORAM  
UZZIAH  
JOTHAM  
AHAZ  
HEZEKIAH  
MANASSEH  
AMON  
JOSIAH  
JECONIAH  
SHEALTIEL  
ZERUBBABEL  
ABIUD  
ELIAKIM  
AZOR  
ZADOK  
ACHIM  
ELIUD  
ELEAZAR  
MATTHAN  
**JACOB**

**JOSEPH**

DAVID	NERI
NATHAN	SHEALTIEL
MATTATHAH	ZERUBBABEL
MENAN	RHESA
MELEA	JOANNAS
ELIAKIM	JUDAH
JONAN	JOSEPH
JOSEPH	SEMEI
JUDAH	MATTATHIAH
SIMEON	MAATH
LEVI	NAGGAI
MATTHAT	ESLI
JORIM	NAHUM
ELIEZER	AMOS
JOSE	MATTATHIAH
ER	JOSEPH
ELMODAM	JANNA
COSAM	MELCHI
ADDI	LEVI
MELCHI	MATTHAT
	<b>HELI</b>

**MARY**

## LEGAL LINE

# LUKE

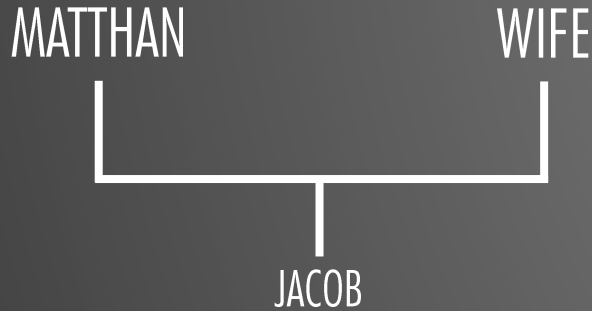
Possible  
Explanation #1

Eli and Jacob were thus uterine brothers. Eli having died childless, Jacob raised up seed to him, begetting, Joseph, his own son by nature, but by law the son of Eli. Thus Joseph was the son of both.

*Julius Africanus*  
(c. 160 – c. 240)

**MATTHEW**

BIOLOGICAL LINE



LEGAL LINE

**LUKE**

Eli and Jacob were thus uterine brothers. Eli having died childless, Jacob raised up seed to him, begetting, Joseph, his own son by nature, but by law the son of Eli. Thus Joseph was the son of both.

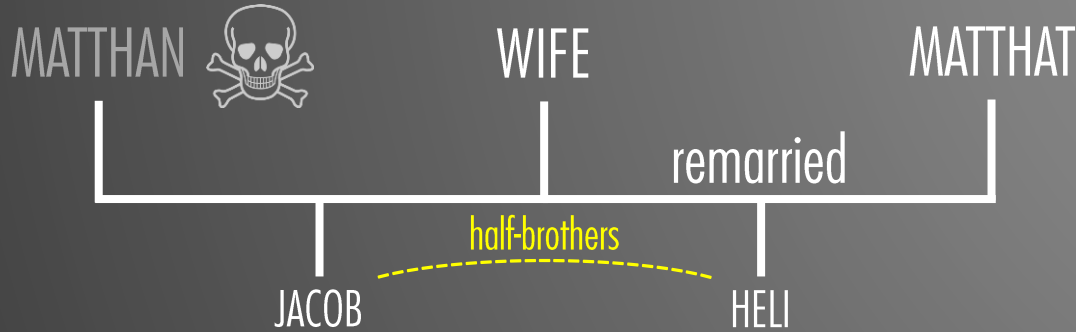
*Julius Africanus*  
(c. 160 — c. 240)

Possible  
Explanation #2



MATTHEW

BIOLOGICAL LINE



LEGAL LINE

LUKE

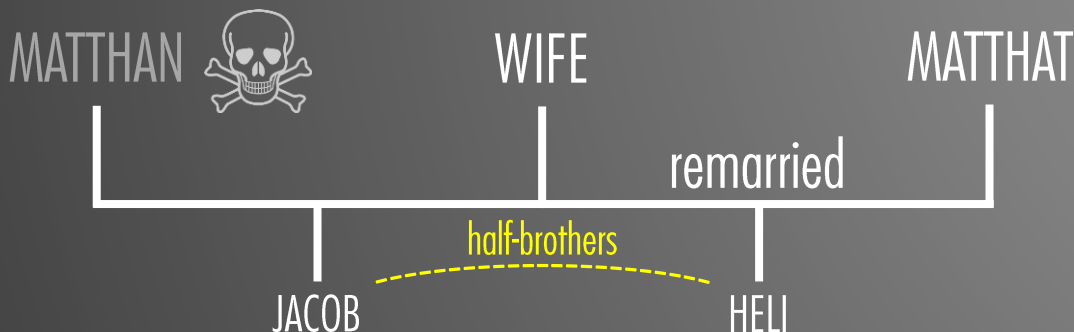
Eli and Jacob were thus uterine brothers. Eli having died childless, Jacob raised up seed to him, begetting, Joseph, his own son by nature, but by law the son of Eli. Thus Joseph was the son of both.

*Julius Africanus*  
(c. 160 – c. 240)

Possible  
Explanation #2

# MATTHEW

BIOLOGICAL LINE



LEGAL LINE

# LUKE

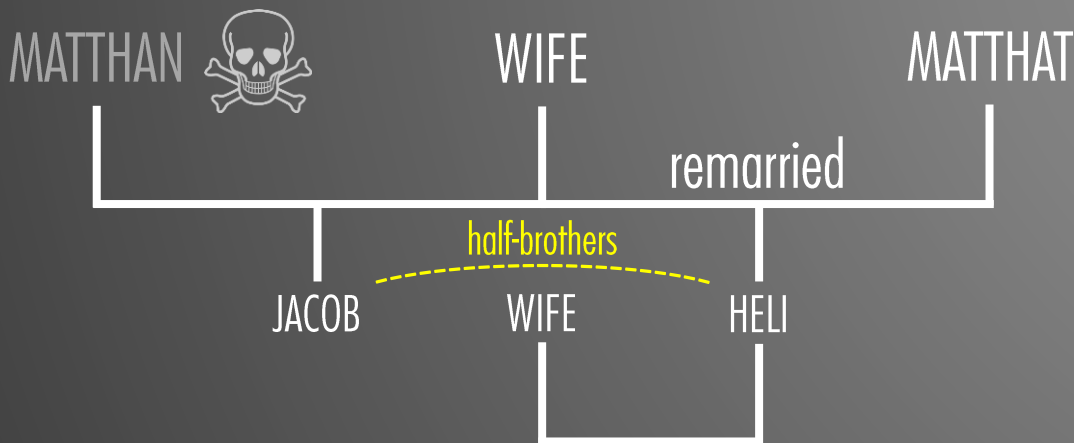
Eli and Jacob were thus **uterine brothers**. Eli having died childless, Jacob raised up seed to him, begetting, Joseph, his own son by nature, but by law the son of Eli. Thus Joseph was the son of both.

*Julius Africanus*  
(c. 160 — c. 240)

Possible  
Explanation #2

# MATTHEW

BIOLOGICAL LINE



LEGAL LINE

# LUKE

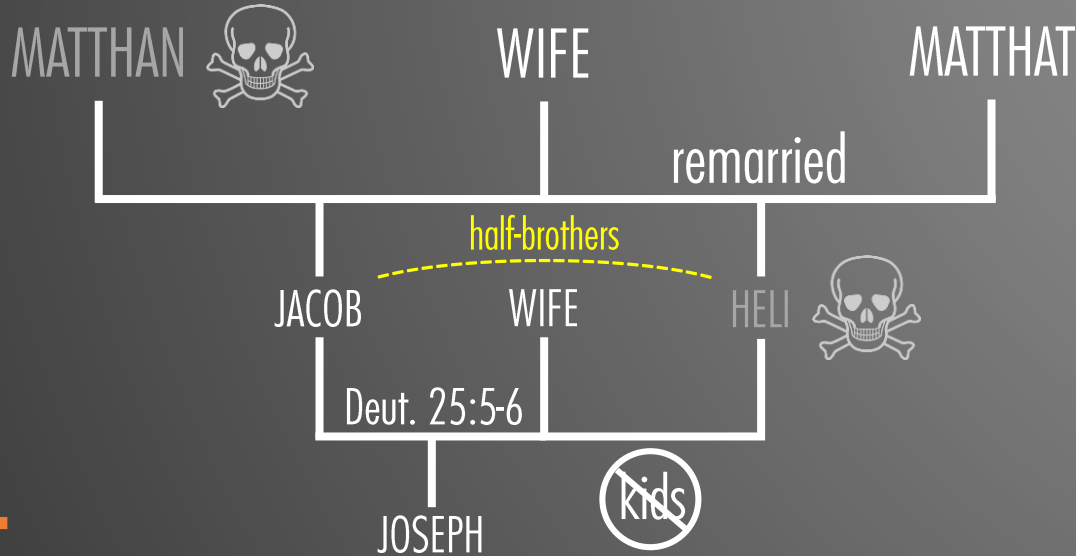
Eli and Jacob were thus **uterine brothers**. Eli having died childless, Jacob raised up seed to him, begetting, Joseph, his own son by nature, but by law the son of Eli. Thus Joseph was the son of both.

*Julius Africanus*  
(c. 160 – c. 240)

Possible  
Explanation #2

MATTHEW

BIOLOGICAL LINE



LEGAL LINE

LUKE

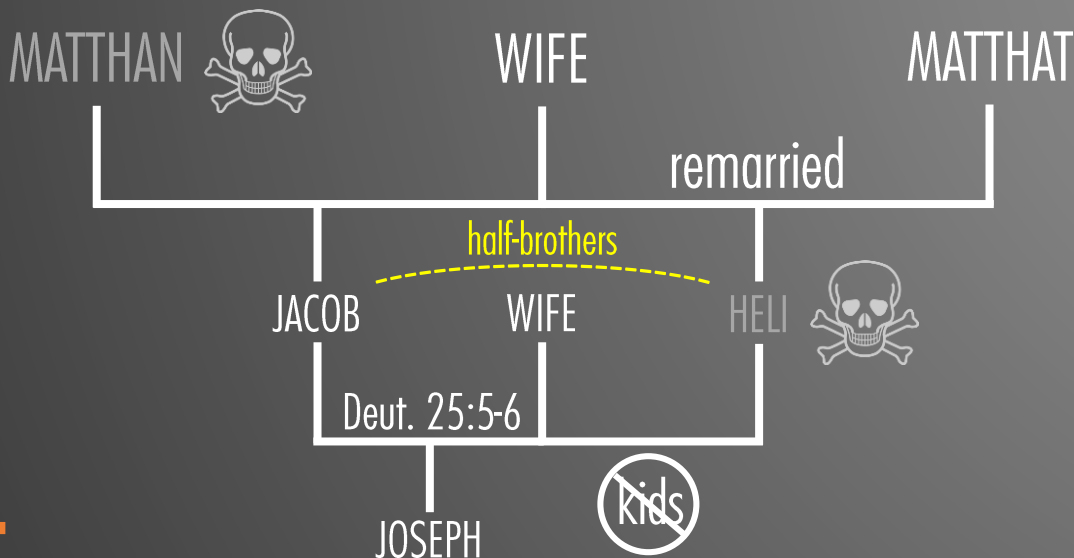
Eli and Jacob were thus **uterine brothers**. Eli having died childless, Jacob raised up seed to him, begetting, Joseph, his own son by nature, but by law the son of Eli. Thus Joseph was the son of both.

*Julius Africanus*  
(c. 160 – c. 240)

Possible  
Explanation #2

# MATTHEW

BIOLOGICAL LINE



LEGAL LINE

# LUKE

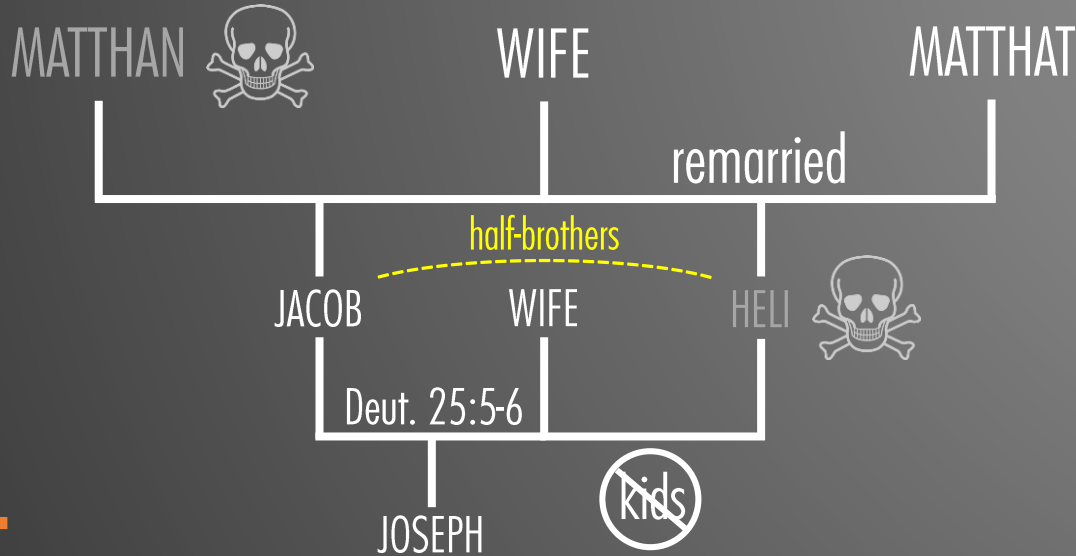
Eli and Jacob were thus **uterine brothers**. Eli having died childless, Jacob raised up seed to him, begetting, Joseph, his own son **by nature**, but by law the son of Eli. Thus Joseph was the son of both.

*Julius Africanus*  
(c. 160 – c. 240)

Possible  
Explanation #2

MATTHEW

BIOLOGICAL LINE



LEGAL LINE

LUKE

Eli and Jacob were thus **uterine brothers**. Eli having died childless, Jacob raised up seed to him, begetting, Joseph, his own son **by nature**, but **by law** the son of Eli. Thus Joseph was the son of both.

*Julius Africanus*  
(c. 160 – c. 240)

Possible  
Explanation #2



**ORDERING**

is chronological

**ACCURACY**

is precise

**COMPRESSION**

is errant

**SELECTIVITY**

is denial

**MYSTERY**

is irreconcilable

**READER**

